

Building our Jewish future



Rosh Pinah Primary School



Established 1956

Rosh Pinah has a long and proud history in the world of Anglo-Jewish education achieving high standards in secular and Jewish Studies. This fundraising brochure encapsulates the vision that Governors and staff share for the building of a new Early Years Unit and the refurbishment of large sections of our school which will enable us to continue to provide an excellent quality of education well into the future.



I am grateful to the Governing Body for their hard work with this project and wholeheartedly endorse the efforts of the Fundraising Committee.

Thank you for your support.

Anthony Wolfson Head Teacher

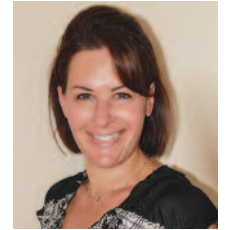
The Trustees wholeheartedly support the proposed development at Glengall Road which will not only enable the whole school to be located on one site but will also provide greatly enhanced facilities. We feel sure that together with help of the wider community the Governors will achieve their goal.



Peter Ohrenstein Chairman, Scopus Jewish Educational Trust

The Governing Body is immensely proud of Rosh Pinah and its history yet mindful that we must ensure that this vital building scheme is achieved to provide the facilities to educate the next generations. Please help us build our Jewish future.

Barbara Hotz Chair of Governors



I have had the honour of serving as Principal of Rosh Pinah Primary School for more than a decade which has been a real source of pride for me.

Due to the sterling work of both the teachers and Governors, the school is facing a new, exciting hurdle. There is a very real need to expand the premises and to upgrade the facilities in order to maintain the standards of excellence which the school has always prided itself on.

Schools are the building blocks for the future instilling into the next generation the values and qualities with which to be able to navigate through life. For Rosh Pinah to continue to deliver at a level we've all come to expect from the school, we all need to do our practical bit to contribute the bricks and help build that future.

It is charity that makes the world go round and children that make the ride worthwhile. By getting involved we can all do our bit for the sake of our children and indeed a little slice of our world.

May we all merit experiencing only true nachas from all our children.

Rabbi Yitzchak Y. Schochet



The problem

Mowbray Road: The EYU premises

The EYU building is in need of substantial, urgent and prohibitively costly repairs. The roof is damaged and leaking; we have been advised that it needs replacing. The basement fills with several feet of water in wet weather.

Glengall Road: The Main School, years 1-6

Completed in 1986, the building fails to comply with current guidelines for classroom size, ventilation and current legislation for disability access. There is poor use of indoor space. There is a pressing need to rejuvenate the building to deliver the best Jewish and secular education for the 21st century.

Additional Reception Class in September 2011

In response to requests from the Borough of Barnet to alleviate the shortage of primary school places, the school is taking an additional Reception class for one year, bringing the total number of children in Reception up to 90. The Mowbray site is not large enough to accommodate this year group. The Local Authority is funding the purchase of a demountable classroom to be sited on the Glengall grounds, providing the requisite space.



The solution

Working closely together, the Governing Body and the Leadership Team have created a vision for redeveloping the campus. This incorporates building a new state of the art Early Years Unit joined to the main school site in Glengall Road together with the structural refurbishment of the existing building to bring it up to date in line with modern educational requirements. Rosh Pinah Primary School would be on a single site with larger classrooms, designated Jewish Studies rooms and small group teaching areas – providing significant educational and logistical benefits to pupils, staff and parents.

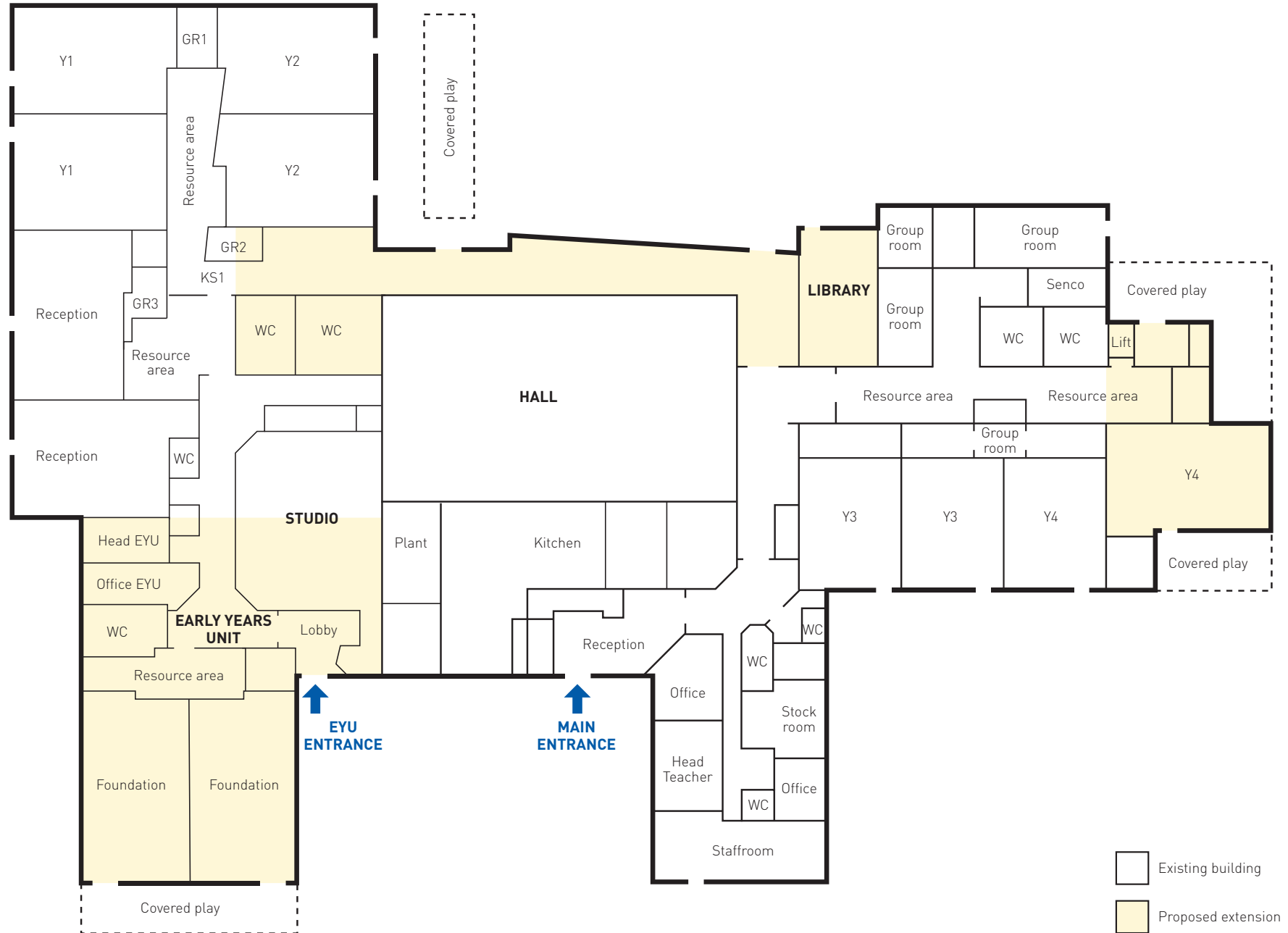
The cost

The total cost of the build and redevelopment of Glengall Road is £4 million*.

We have secured the following funding to date:

Central Government funding*	£922,000
State funding for capital projects	£59,000
School Fun Day 2011	£12,000
The Rosh Pinah Jewish Primary School Trust*	£109,000
Pledge to benefit from the proceeds of sale of the Mowbray Road Premises (EYU)¹ plus additional Rosh Pinah Trust funding	£900,000
Total anticipated funding	£2,002,000
FUNDING REQUIRED	£1,998,000

* In 2010 we spent £325,000 on rebuilding the kitchen in Glengall Road in anticipation of a one site school
¹ Not available until at least September 2013





The phases

Replacement and upgrading of all windows and doors

August 2011 (during summer holidays)

The new windows and doors will be modern and double glazed, making the school energy efficient.

Phase 1: West Wing enabling works

August 2011

In preparation for the arrival of the Reception years at the start of 2011/2012 and to facilitate future building works, alterations will be made to the existing West Wing to create more classrooms in this part of the School. When work is complete there will be two Year 1 classrooms and three Reception classrooms including a separate Reception Resource Area.

Phase 2: Early Years Unit extension

January 2012 – September 2012

Construction work will begin on a new Early Years Unit which will include two new foundation classrooms, large studio, offices and toilet facilities. Works will be completed in time for the start of the new 2012/13 school year in September.

Phase 3: East extension and East Wing Lower Floor improvements

July 2012 – December 2012

Whilst work on Phase 2 progresses, alterations will begin on the ground floor of the East Building. A new two storey extension will give the School an additional classroom, group room and lift. Once complete there will be two classrooms for Year 3 and Year 4, group rooms, resource areas and improved toilet facilities.

Phase 4: West Wing improvements

January 2013 – March 2013

Classrooms in the West Wing will be increased in size and the resource areas reconfigured. Once complete there will be two classrooms for Reception, Year 1 and Year 2 including a number of group rooms and improved resource areas.

Phase 5: East Wing Upper Floor improvements

July 2013 – October 2013

In the 2013 Summer holidays, work will begin on increasing the size of classrooms on the top floor of the East Wing. Once completed there will be two classrooms for Year 5 and Year 6, offices, resource areas and improved toilet facilities.

Phase 5B: New library, walkway and front entrance

July 2013 – November 2013

The final phase will see the construction of a new library and walkway providing easy access from the West to East areas of the school. Hard landscaping to the front of the school will provide a separate footpath for pupils and a number of parking spaces for teachers and visitors.

The team

Rosenfelder Associates are highly regarded for their inspiring yet practical designs with particular expertise in schools, having designed more than 22 new build and major extension/alteration schemes.



Northcroft is a leading international construction consultancy firm offering tailored solutions to clients investing in construction, property and infrastructure.



With a highly experienced team in the education sector they aim to provide inspiring buildings and environments for students and staff to interact, learn and work in. Working closely with the project team their in-house advisors research ways to deliver more flexible and energy efficient buildings that are delivered in time for school.

Making a difference

Our children come from a wide range of religious and social-economic backgrounds. We are an inclusive school, catering to the needs of all pupils.

Our Jewish education underpins all that is taught in Rosh Pinah. Our name means 'corner stone' and Jewish knowledge, Torah study and good midot comprise our foundation stone.

We imbue our pupils with a love of Jewish life, study skills which enhance all their learning, respect for others and a love of Israel.

We believe that all children deserve the opportunity to learn about their religion and culture irrespective of their background. At Rosh Pinah:

- we teach Chumash from Year 3 according to the Jewish Curriculum Partnership (JCP) program
- we teach Ivrit according to the JCP program
- we open on Chol Hamoed Succot to give children who do not have a Succah at home the opportunity to perform the mitzvah of the Succah
- we teach Hebrew Reading using the highly regarded Aleph Champ scheme
- we have close partnerships with 'Seed' and 'Tribe'
- we have regular visits from Tzivos Hashem
- we operate extended hours most days from 07:45 to 17:00.





Glengall Road
Edgware
Middlesex
HA8 8TE

Tel 020 8958 8599
Fax 020 8905 4853
Email admin@rpps.org.uk
www.rpps.org.uk

Hon Principal Rabbi YY Schochet MA
Head Teacher Mr A Wolfson B.Ed(Hons), MA, M.Ed, NPQH



**Rosh Pinah
Primary School**